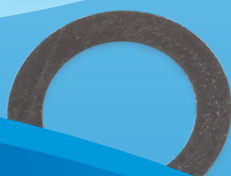
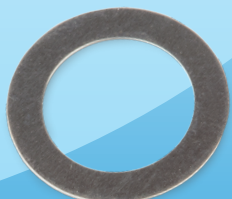
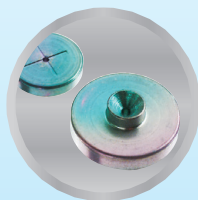


## Give Your Data Restek's Seals (of Approval)

Keep your data looking  
its best with top-quality  
Restek inlet seals.

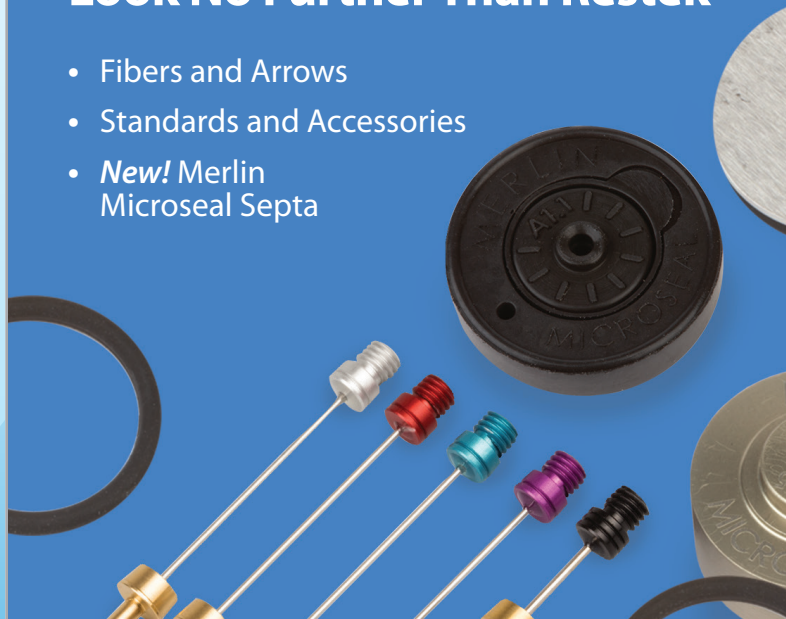
- Gold-Plated
- Siltek-Treated
- Dual Vespel Ring



## Your First and Best Choice for Chromatography

## For Solid Phase Microextraction (SPME), Look No Further Than Restek

- Fibers and Arrows
- Standards and Accessories
- *New!* Merlin Microseal Septa



## Apply Force to Your LC Methods

- Long-lasting and reproducible
- Fully scalable between HPLC and UHPLC
- Premium quality





Revolutionary technology and inertness deliver the next level of

## True Blue Performance

- Deactivation
- Reproducibility • Productivity

Learn more and find our full selection at [www.restek.com/topaz](http://www.restek.com/topaz)



### Featured Topaz Liners

For Agilent GCs			ID x OD x Length	qty.	cat.#
	Precision w/Quartz Wool	Split	4.0 mm x 6.3 mm x 78.5 mm	5-pk.	23305
	Straight w/Quartz Wool	Split	4.0 mm x 6.3 mm x 78.5 mm	5-pk.	23300
	Single Taper w/Quartz Wool	Splitless	4.0 mm x 6.5 mm x 78.5 mm	5-pk.	23303
	Single Taper	Splitless	4.0 mm x 6.5 mm x 78.5 mm	5-pk.	23302
For PerkinElmer GCs			ID x OD x Length	qty.	cat.#
	Precision w/Quartz Wool	Split	4.0 mm x 6.2 mm x 92.1 mm	5-pk.	23450
	Straight w/Quartz Wool	Split	4.0 mm x 6.2 mm x 92.1 mm	5-pk.	23449
	Straight w/Quartz Wool	Splitless	2.0 mm x 6.2 mm x 92.1 mm	5-pk.	23451
For Sciex/Bruker/Varian GCs			ID x OD x Length	qty.	cat.#
	Precision w/Quartz Wool	Split	4.0 mm x 6.3 mm x 78.5 mm	5-pk.	23328
	Single Taper w/Quartz Wool	Splitless	4.0 mm x 6.5 mm x 78.5 mm	5-pk.	23332
	Single Taper	Splitless	4.0 mm x 6.5 mm x 78.5 mm	5-pk.	23331
For Shimadzu GCs			ID x OD x Length	qty.	cat.#
	Straight w/Quartz Wool	Split	3.5 mm x 5.0 mm x 95 mm	5-pk.	23319
	Precision w/Quartz Wool	Split	3.5 mm x 5.0 mm x 95 mm	5-pk.	23320
	Single Taper w/Quartz Wool	Splitless	3.5 mm x 5.0 mm x 95 mm	5-pk.	23336
	Single Taper w/Quartz Wool	Splitless	3.5 mm x 5.0 mm x 95 mm	5-pk.	23322
For Thermo Scientific GCs			ID x OD x Length	qty.	cat.#
	Straight w/Quartz Wool	Split	4.0 mm x 6.3 mm x 78.5 mm	5-pk.	23444
	Precision w/Quartz Wool	Split	4.0 mm x 6.3 mm x 78.5 mm	5-pk.	23267
	Single Taper w/Quartz Wool	Splitless	4.0 mm x 6.5 mm x 78.5 mm	5-pk.	23447
	Single Taper	Splitless	4.0 mm x 6.5 mm x 78.5 mm	5-pk.	23446



Leverage the outstanding inertness, low bleed, and high reproducibility of Rxi 3-in-1 technology to gain:

- Accurate Data
- The Right Results Fast
- Maximized Instrument Uptime



### Featured Rxi Columns

#### Rxi-17Sil MS

Ideal for active environmental compounds, such as PAHs, PCBs, and more.

Description	temp. limits	qty.	cat.#
15 m, 0.25 mm ID, 0.25 µm	40 to 340/360 °C	ea.	14120
30 m, 0.25 mm ID, 0.25 µm	40 to 340/360 °C	ea.	14123

#### Rxi-35Sil MS

Ideal for substituted polar compounds, such as drugs, pesticides, herbicides, PCBs, phenols, etc.; especially good for cannabinoids.

Description	temp. limits	qty.	cat.#
15 m, 0.25 mm ID, 0.25 µm	50 to 340/360 °C	ea.	13820

#### Rxi-624Sil MS

Ideal for volatile organics and residual solvents; a great choice for USP<467>.

Description	temp. limits	qty.	cat.#
30 m, 0.25 mm ID, 1.40 µm	-20 to 300/320 °C	ea.	13868

#### Rxi-1301Sil MS

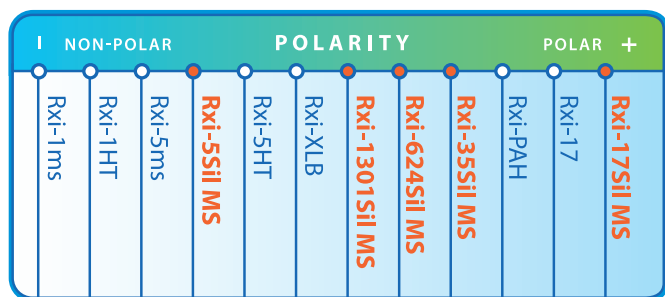
Ideal for solvents, glycols, and other polar compounds.

Description	temp. limits	qty.	cat.#
30 m, 0.25 mm ID, 0.25 µm	-60 to 320 °C	ea.	16094

#### Rxi-5Sil MS

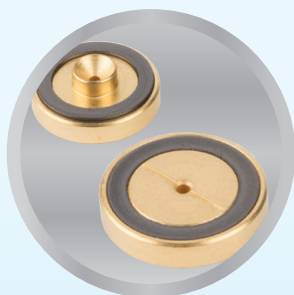
Ideal for semivolatiles, PAHs, chlorinated hydrocarbons, phthalates, phenols, amines, organochlorine pesticides, organophosphorus pesticides, drugs, solvent impurities, and hydrocarbons.

Description	temp. limits	qty.	cat.#
30 m, 0.25 mm ID, 0.25 µm	-60 to 320/350 °C	ea.	13623
30 m, 0.25 mm ID, 0.25 µm w/5 m Integra-Guard Column	-60 to 320/350 °C	ea.	13623-124
30 m, 0.25 mm ID, 0.50 µm	-60 to 320/350 °C	ea.	13638
30 m, 0.25 mm ID, 0.50 µm w/5 m Integra-Guard Column	-60 to 320/350 °C	ea.	13638-124



Rxi columns span the polarity range, so you can select a column perfectly matched to your analysis.

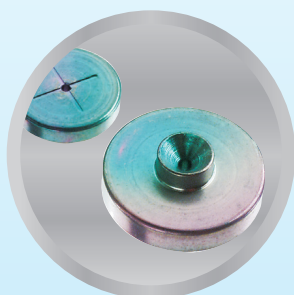
# Give Your Data Restek's Seals (of Approval)



Inlet seals contact the sample, so they must be replaced frequently to prevent adsorption of active compounds. Septum fragments and sample residue also accumulate on the surface, affecting your results. *Keep your data looking its best with top-quality Restek inlet seals.*

## Gold-Plated Inlet Seals

Gold-Plated Replacement Inlet Seals	2-pk. cat.#	10-pk. cat.#	50-pk. cat.#
0.8 mm ID Single-column	21317	21318	23415
1.2 mm ID 0.25/0.32 mm ID Dual-column	21305	21306	—
0.8 mm ID Cross-Disk Inlet Seal	20477	20476	—
1.2 mm ID Cross-Disk Inlet Seal	21009	21010	—



## Siltek-Treated Inlet Seals

Siltek treatment provides enhanced inertness versus stainless steel.

Siltek-Treated Replacement Inlet Seals	2-pk. cat.#	10-pk. cat.#	50-pk. cat.#
0.8 mm ID Single-column	21319	21320	23416
1.2 mm ID 0.25/0.32 mm ID Dual-column	21307	21308	—
0.8 mm ID Cross-Disk Inlet Seal	20475	20474	—
1.2 mm ID Cross-Disk Inlet Seal	21011	21012	—



## Dual Vespel Ring Inlet Seals

Washerless, Leak-Tight Seals for Agilent GCs

Gold-Plated Dual Vespel Ring Inlet Seals	2-pk. cat.#	10-pk. cat.#	50-pk. cat.#
0.8 mm ID Gold-Plated	21240	21241	23418
1.2 mm ID Gold-Plated	21246	21247	—
Siltek-Treated Dual Vespel Ring Inlet Seals	2-pk. cat.#	10-pk. cat.#	50-pk. cat.#
0.8 mm ID Siltek-Treated	21242	21243	23419
1.2 mm ID Siltek-Treated	21248	21249	—

Stock up on inlet seals at [www.restek.com/GCacc](http://www.restek.com/GCacc)

## Switch to Advanced Thermolite PLUS Septa Technology for Optimal Inlet Performance

- Usable to 350 °C inlet temperature.
- Ultra-low bleed minimizes background signal.
- Plasma coating eliminates sticking.
- Precision molded for consistent, accurate fit.
- Preconditioned and GC-FID tested.

Need a higher-temp option for demanding GC and GC-MS applications?

Check out Premium Non-Stick BTO Septa at [www.restek.com/septa](http://www.restek.com/septa)



Septum Diameter	48-pk. cat.#	50-pk. cat.#	100-pk. cat.#
5 mm (3/16"), with CenterGuide, predrilled	—	23860	23861
6 mm (1/4")	—	23874	—
7 mm	—	23875	—
8 mm	—	23876	—
9 mm, with CenterGuide	—	23862	23863
9.5 mm (3/8")	—	23877	—
10 mm	—	23878	—
11 mm (7/16"), with CenterGuide	—	23864	23865
11.5 mm, with CenterGuide	—	23866	23867
12.7 mm (1/2"), with CenterGuide	23868	—	—
17 mm, with CenterGuide	23870	—	—
Shimadzu Plug	—	23872	23873

Note: Due to differences in inlet design, the actual septum temperature for a given inlet setpoint can vary by manufacturer. Restek recommends using only BTO septa in Thermo TRACE and Focus GCs.

\*For 17 mm inlets, the maximum temperature for Thermolite Plus septa is 300 °C.

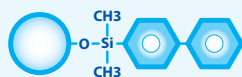


## Apply Force to your UHPLC Methods

- **Long-lasting and reproducible**—even with rapid cycling and elevated UHPLC pressures.
- **Fully scalable between HPLC and UHPLC**—easily transfer and optimize methods.
- **Premium quality**—Force LC columns are backed by our 100% Pure Satisfaction guarantee.

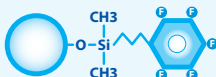
### Time-Tested Restek Biphenyl Phase:

The established choice for bioanalytical testing since 2005.



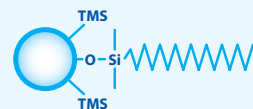
### Reliably Versatile Restek FluoroPhenyl Phase:

Get the power of HILIC and reversed-phase modes in one LC column.



### General-Purpose Restek C18 Phase:

Traditional end-capped C18 ideal for general-purpose use.



	30 mm Length	50 mm Length	100 mm Length
<b>Force Biphenyl 1.8 µm Columns</b>			
2.1 mm ID	9629232	9629252	9629212
3.0 mm ID	—	962925E	962921E
<b>Force C18 1.8 µm Columns</b>			
2.1 mm ID	9634232	9634252	9634212
3.0 mm ID	—	963425E	963421E
<b>Force FluoroPhenyl 1.8 µm Columns</b>			
2.1 mm ID	9639232	9639252	9639212
3.0 mm ID	—	963925E	963921E

Order your 1.8, 3, and 5 µm Force columns now at [www.restek.com/force](http://www.restek.com/force)

## Reliably Filter Out Particulates and Extend UHPLC Column Lifetime with UltraShield UHPLC PreColumn Filters

- Cost-effective protection for UHPLC systems.
- Minimize extra column volume.
- Maximize sample throughput with SPE, SLE, or other extensive sample preparations.
- Connect easily to any brand of column—including both Force and Raptor 1.8 µm columns.



Description	Filter Porosity	qty.	cat.#
UltraShield UHPLC PreColumn Filter	0.2 µm frit	ea.	25809
		5-pk.	25810
		10-pk.	25811

For 3 and 5 µm Force columns, use EXP guard column cartridges



# Raptor<sup>®</sup> LC Columns

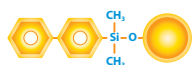
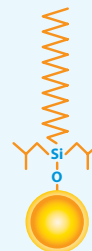
*Selectivity Accelerated*

- Drastically faster analysis times.
- Substantially improved resolution.
- Increased sample throughput.
- Dependable reproducibility.



## Ahead of the Curve for Large, Multiclass Lists by Mass Spec

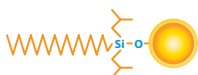
The Raptor ARC-18 phase is ideal for high-throughput LC-MS/MS with minimal sample prep. Its well-balanced retention profile offers better detection and integration of large, multiclass lists. And, it endures low-pH mobile phases without sacrificing data quality.



**Time-Tested Restek Biphenyl Phase:**  
The established choice for bioanalytical testing since 2005.



**Reliably Versatile Restek FluoroPhenyl Phase:**  
Get the power of HILIC and RP modes in one LC column.



**Acid-Resistant Restek ARC-18 Phase:**  
Ahead of the curve for large, multiclass lists by mass spec.



**General-Purpose Restek C18 Phase:**  
Traditional end-capped C18 ideal for general-purpose use.



**Rugged, MS-Friendly Restek HILIC-Si Phase:**  
Simplify the switch to HILIC on both HPLC and UHPLC systems.



**Matrix-Eliminating Restek EtG/EtS Phase:**  
Resolve analytes in a fast, 4-minute dilute-and-shoot method.

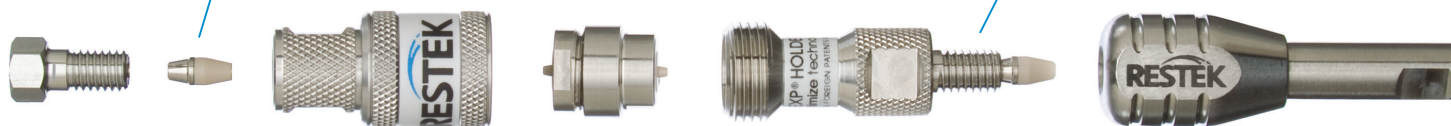
Length	2.1 mm cat.#	3.0 mm cat.#	4.6 mm cat.#
<b>1.8 µm Columns</b>			
30 mm	9314232	—	—
50 mm	9314252	931425E	—
100 mm	9314212	931421E	—
150 mm	9314262	—	—
<b>2.7 µm Columns</b>			
30 mm	9314A32	9314A3E	9314A35
50 mm	9314A52	9314A5E	9314A55
100 mm	9314A12	9314A1E	9314A15
150 mm	9314A62	9314A6E	9314A65
<b>5 µm Columns</b>			
30 mm	—	931453E	—
50 mm	9314552	931455E	9314555
100 mm	9314512	931451E	9314515
150 mm	9314562	931456E	9314565
250 mm	—	—	9314575

## Raptor and Force Columns Live Even Longer with Quick-Change EXP Guards

Patented Reusable  
Titanium Hybrid Ferrules

Tool-Free Cartridge  
Changeouts

Auto-Adjusting  
ZDV Connection



### EXP Direct Connect Holder

Description	qty.	cat.#
EXP Direct Connect Holder for EXP Guard Cartridges (includes hex-head fitting & 2 ferrules)	ea.	25808

Maximum holder pressure: 20,000 psi (1,400 bar)

### Force EXP Guard Column Cartridges

Description	qty.	5 x 2.1 mm cat.#	5 x 3.0 mm cat.#	5 x 4.6 mm cat.#
Force Biphenyl EXP Guard Column Cartridge	3-pk.	962950252	962950253	962950250
Force C18 EXP Guard Column Cartridge	3-pk.	963450252	963450253	963450250
Force FluoroPhenyl EXP Guard Column Cartridge	3-pk.	963950252	963950253	963950250

Maximum cartridge pressure: 600 bar/8,700 psi.

### Raptor EXP Guard Column Cartridges (3-Packs)

Description	Particle Size	5 x 2.1 mm cat.#	5 x 3.0 mm cat.#	5 x 4.6 mm cat.#
Raptor C18	UHPLC	9304U0252	9304U0253	—
Raptor C18	2.7 µm	9304A0252	9304A0253	9304A0250
Raptor C18	5 µm	930450252	930450253	930450250
Raptor ARC-18	UHPLC	9314U0252	9314U0253	—
Raptor ARC-18	2.7 µm	9314A0252	9314A0253	9314A0250
Raptor ARC-18	5 µm	931450252	931450253	931450250
Raptor Biphenyl	UHPLC	9309U0252	9309U0253	—
Raptor Biphenyl	2.7 µm	9309A0252	9309A0253	9309A0250
Raptor Biphenyl	5 µm	930950252	930950253	930950250
Raptor FluoroPhenyl	UHPLC	9319U0252	9319U0253	—
Raptor FluoroPhenyl	2.7 µm	9319A0252	9319A0253	9319A0250
Raptor FluoroPhenyl	5 µm	931950252	931950253	931950250
Raptor HILIC-Si	2.7 µm	9310A0252	9310A0253	9310A0250

Maximum cartridge pressure: 1,034 bar/15,000 psi\* (UHPLC), 600 bar/8,700 psi (2.7 µm); 400 bar/5,800 psi (5 µm)

\* For maximum lifetime, recommended maximum pressure for UHPLC cartridges is 830 bar/12,000 psi.

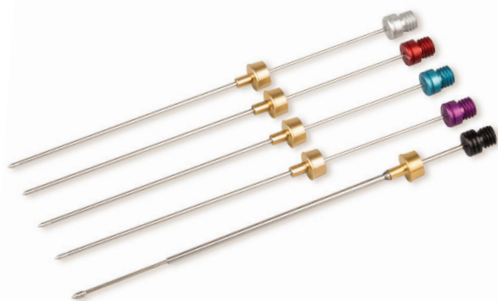
Hybrid Ferrule U.S. Patent No. 8,201,854; EXP Holders U.S. Patent No. 8,696,902; EXP2 Wrench U.S. Patent No. D766,055. Other U.S. and Foreign Patents Pending. The EXP, Free-Turn, and the Opti- prefix are registered trademarks of Optimize Technologies, Inc.



# For Solid-Phase Microextraction (SPME),

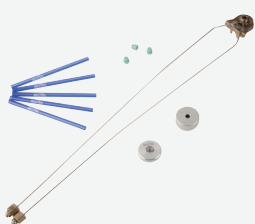
## Set Your Sights on Superior Performance with Restek PAL SPME Arrow

- Rugged stainless steel construction ensures longer lifetimes.
- Faster extraction means higher sample throughput.
- Better sensitivity allows lower LODs.



Description	Material	Hub Color	Thickness (μm)	Needle Diameter (mm)	Recommended Analytes	qty.	cat.#
SPME Arrow	Polydimethylsiloxane (PDMS)	Red	100 μm	1.1 mm	Volatile, 60–275 g/mol*	ea.	27485
SPME Arrow	Polydimethylsiloxane (PDMS)	Black	250 μm	1.5 mm	Volatile, 60–275 g/mol (high capacity)*	ea.	27484
SPME Arrow	Polyacrylate	Gray	100 μm	1.1 mm	Polar, semivolatile, 80–300 g/mol*	ea.	27488
SPME Arrow	Carbon Wide Range (WR)/PDMS	Light Blue	120 μm	1.1 mm	Highly volatile, 30–225 g/mol*	ea.	27487
SPME Arrow	Divinylbenzene (DVB)/PDMS	Violet	120 μm	1.1 mm	Amines and polar compounds, 60–300 g/mol*	ea.	27486
SPME Arrow Method Development Kit						Set of 5	27489

\*These molecular weight ranges are a reasonable approximation; however, end users should verify suitability for their specific application. All Restek PAL SPME Arrows have 20 mm of phase bonded onto stainless steel. Due to the relatively large diameter of Restek PAL SPME Arrows, you must modify the GC inlet using an instrument-specific conversion kit from Restek prior to use.



### Restek PAL SPME Arrow GC-Specific Conversion Kits

Due to the relatively large diameter of Restek PAL SPME Arrows, you must modify the GC inlet using an instrument-specific conversion kit prior to use.

Description	Instrument	Includes	qty.	cat.#
Restek PAL SPME Arrow Conversion Kit	for Agilent GC 6890 Split/Splitless Injector (for canister-type filters)	Topaz 1.8 mm ID straight/SPME inlet liner, 5-pk. (cat.# 23280), Thermolite Plus septa, 3-pk. (cat.# 23864), Split/splitless weldment; large, canister-type filter (cat.# 27502), Septum nut for 6890 split/splitless weldments (cat.# 27503), Injector adaptor cup (cat.# 27496)	kit	27492

## High-Performing SPME Fibers Now Available from Restek



Description*	Max. Temp.	Recommended Operating Temp.	Restek Hub Color	Similar to Supelco Hub Color	ea. cat.#	3-pk. cat.#	5-pk. cat.#
<b>Polydimethylsiloxane (PDMS) Fiber, Nonpolar</b>							
7 μm	340 °C	200–340 °C	Green	Green	27482.1	27482.3	27482.5
30 μm	280 °C	200–280 °C	Golden	Yellow	27481.1	27481.3	27481.5
100 μm	280 °C	200–280 °C	Red	Red	27480.1	27480.3	27480.5
<b>Polyacrylate (PA) Fiber, Polar</b>							
85 μm	280 °C	200–280 °C	Gray	White	27478.1	27478.3	27478.5
<b>Carbon Wide Range (WR)/PDMS Fiber, Bipolar</b>							
95 μm	300 °C	220–300 °C	Dark Blue	Black	27479.1	27479.3	27479.5

\*All Restek PAL SPME fibers are 10 mm in length and are housed in a 23-gauge needle. The phase is bonded onto a fused silica fiber core.



### SPME Performance Test Mix (2 components)

Nitrobenzene (98-95-3)  
2-Nitrotoluene (88-72-2)

1 μg/mL in water:methanol (99:1), 1 mL/ampul

cat.# 31015 (3-pk)

### SPME MicroCenter Caps and Septa

Micro-thin septum center pierces easily without bending needles or breaking SPME fibers.



Cat.# 23850 and 23851 not for use with 20 mm caps.

Description	Type	Cap Size	Color	Septa Material	100-pk. cat.#	1,000-pk. cat.#
SPME Vial Cap	Screw-Thread	18 mm		MicroCenter PTFE/Silicone	23852	23853
SPME Vial Cap	Bi-Metal Crimp	20 mm	Blue	MicroCenter PTFE/Silicone	23854	23855
SPME Vial Cap	Bi-Metal Crimp	20 mm	Red	MicroCenter PTFE/Silicone	23856	23857
SPME Vial Cap	Steel Crimp	20 mm	Gold	MicroCenter PTFE/Silicone	23858	23859
SPME Vial Septa		18 mm		MicroCenter PTFE/Silicone	23850	23851

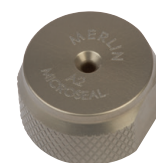
# Look No Further Than Restek

## Switch to the Longer Septum Life and Simplicity of Merlin Microseals for SPME

- Eliminates septum coring and prolongs septum life.
- Consistently low needle-insertion force.
- Simple installation with no injection port modification.
- Larger diameter to accept SPME Arrow (1.1 mm or 1.5 mm).

### Merlin Microseals for SPME Arrow:

Description	Instrument	Includes	Merlin #	qty.	cat.#
SPME Arrow Application Nut (3 to 100 psi)	for Agilent GCs	nut (1)	1000AG	ea.	23228
SPME Arrow Application Adaptor Kit (3 to 100 psi)	for Shimadzu 2010, 2025, and 2030 GCs	nut (1); adaptor (1); O-rings (4)	1000SH	ea.	23229
SPME Arrow Application Nut (3 to 100 psi)	for Thermo TRACE 1300 and 1310 GCs	nut (1)	1000TS	ea.	23230
SPME Arrow Application Adaptor Kit (3 to 100 psi)	for Thermo TRACE Ultra GCs	nut (1); adaptors (3); O-rings (4)	1000TU	ea.	23231
<b>Replacement Microseals for Merlin Microseal Septa</b>					
Microseal for 1.1 mm SPME Arrow Applications (3 to 100 psi)			1100	ea.	23232
Microseal for 1.5 mm SPME Arrow Applications (3 to 100 psi)			1500	ea.	23233



23228

## Merlin Microseals for SPME Fiber:

### Merlin Microseal Kits

Type	Instrument	Similar to Part #	Merlin #	qty.	cat.#
General-Purpose Kit (3 to 100 psi), 2 Seals	for Agilent GCs	Agilent 5181-8833	404	kit	22810
General-Purpose Kit (3 to 100 psi), 1 Seal	for Agilent GCs	Agilent 5182-3442	405	kit	22811
Low-Pressure Kit (1 to 45 psi), 2 Seals	for Agilent GCs		304	kit	22813
Low-Pressure Kit (1 to 45 psi), 1 Seal	for Agilent GCs	Agilent 5181-8816	305	kit	22814
General-Purpose Kit	for Bruker/Varian 1078/1079 GCs		21-11	kit	22779
General-Purpose Kit	for Bruker/Varian 1177 GCs		22-11	kit	22780
General-Purpose Kit (3 to 100 psi)	for PerkinElmer GCs	PerkinElmer N9303344	51-12	kit	22781
General-Purpose Kit (3 to 100 psi)	for Shimadzu GCs		61-12	kit	22972
General-Purpose Kit (3 to 100 psi)	for Thermo 1300 and 1310 GCs		81-12	kit	22642
Merlin Microseal Adaptor	for Thermo TRACE Ultra GCs		85-10	kit	23239



22642

### Replacement Microseals for Merlin Microseal Septa

Replacement Microseals	Merlin#	qty.	cat.#
Microseal for Traditional SPME Fiber Applications (3 to 100 psi)	21-01	ea.	22782



## Restek PAL SPME Manual Injection Kit

Designed to house SPME Arrows and traditional SPME fibers during extraction and injection steps.

Description	Includes	qty.	cat.#
Restek PAL SPME Manual Injection Kit	SPME manual holder, SPME manual extraction guide, SPME manual injection guide	kit	27490



## More of What You Need to Keep Your LC Flowing

NEW!

Restek has expanded our line of LC accessories to bring you even more of what you need to keep your LC flowing:

- Couplers, fittings, unions, tees, and crosses.
- PEEK and stainless steel tubing.
- Mobile phase maintenance and safety products.

And, that's on top of our already wide selection of instrument replacement parts and supplies.

*Featuring: New Filters to Preserve Your Mobile Phase Better than Ever*

### Bottle Top Valves and Filters

- Inlet valves protect your lab from volatile compounds; use with a filter to protect your mobile phase from bacterial contamination.
- Outlet valve regulates pressure during helium sparging.



Description	Similar to VICI Part #	qty.	cat.#
Inlet Valve (no filter) for Bottle Tops	JR-S-20006	ea.	27838
Inlet Valve with 4 mm Filter for Bottle Tops	JR-S-20003	ea.	27839
Inlet Valve with 15 mm Filter for Bottle Tops	JR-S-20009	ea.	27840
Outlet Valve with 4 mm Filter for Bottle Tops	JR-S-20004	ea.	27841
Replacement 4 mm Filter for Bottle Tops	JR-S-20007	ea.	27843
Replacement 15 mm Filter for Bottle Tops	JR-S-20008	ea.	27842

### Safety Exhaust Filter with Indicator

- Breakthrough indicator changes from light pink to dark pink to notify you when to change filter.
- Safety filter protects your lab from volatile compounds in waste bottles.



Description	Similar to VICI Part #	qty.	cat.#
Safety Exhaust Filter with Indicator for Bottle Tops	JR-S-20005	ea.	27833



### Related New Products

#### Opti-Cap GL-45 Bottle Tops

Description	Type	qty.	cat.#
Opti-Cap for GL-45 Threaded Bottles	2-Port: holes for (1) 1/16" and (1) 1/8" OD tubing	ea.	27835
Opti-Cap for GL-45 Threaded Bottles	3-Port: holes for (1) 1/16" and (2) 1/8" OD tubing	ea.	27836
Opti-Cap for GL-45 Threaded Bottles	4-Port: holes for (1) 1/16" and (3) 1/8" OD tubing	ea.	27837

#### Hub-Cap Adaptors

Allow the use of the Opti-Cap Top with 4-liter solvent bottles.

Description	qty.	cat.#
Hub-Cap Adaptor (allows use of the Opti-Cap w/4 L solvent bottles)	ea.	26538
Hub-Cap Adaptor Multi-Pack	3-pk.	26539
Hub-Cap Adaptor and Opti-Cap (for use w/GL-45 solvent bottles)	kit	26540

Don't stop at the column; outfit your entire LC system with Restek LC products at [www.restek.com/LCacc](http://www.restek.com/LCacc)

**RESTEK**  
Pure Chromatography

Questions? Contact us or your local Restek representative ([www.restek.com/contact-us](http://www.restek.com/contact-us)).

Restek patents and trademarks are the property of Restek Corporation. (See [www.restek.com/Patents-Trademarks](http://www.restek.com/Patents-Trademarks) for full list.) Other trademarks in Restek literature or on its website are the property of their respective owners. Restek registered trademarks are registered in the U.S. and may also be registered in other countries. To unsubscribe from future Restek communications or to update your preferences, visit [www.restek.com/subscribe](http://www.restek.com/subscribe). To update your status with an authorized Restek distributor or instrument channel partner, please contact them directly.

© 2018 Restek Corporation. All rights reserved. Printed in the U.S.A.

[www.restek.com](http://www.restek.com)



Lit. Cat.# GNE52950-UNV